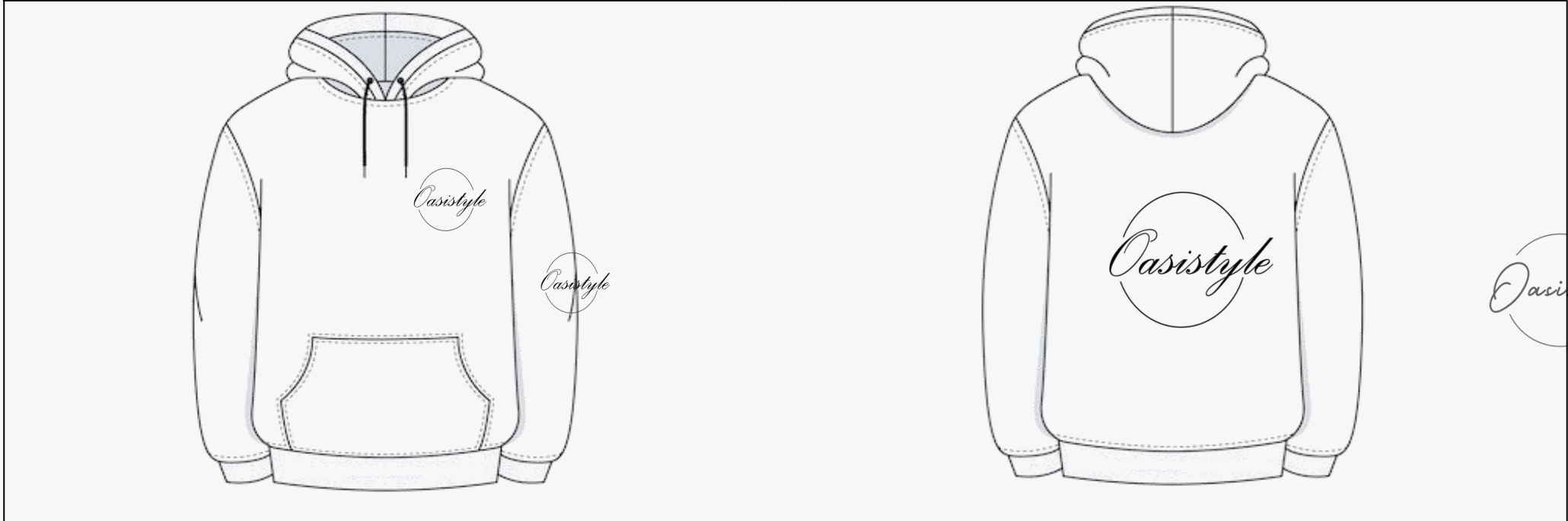


<b>YOUR BRAND</b>	Style:	Date:
-------------------	--------	-------

**NOTE:** This is just an example to help you, but it doesn't need to be filled in the same way. If you don't have the mockup of the final piece, just place the artwork with the measurements and positions you want. Any questions, you can send us anyway and we will help you with the missing information.

<b>FRONT VIEW</b>	<b>BACK VIEW</b>
-------------------	------------------



PRODUCT	Quantity	XS	S	M	L	XL	XXL

<b>Material and color:</b>  Example → American Fleece 340gsm Brushed Pantone Silver Sage 17-0510TCX	<b>Details:</b>
--	-----------------

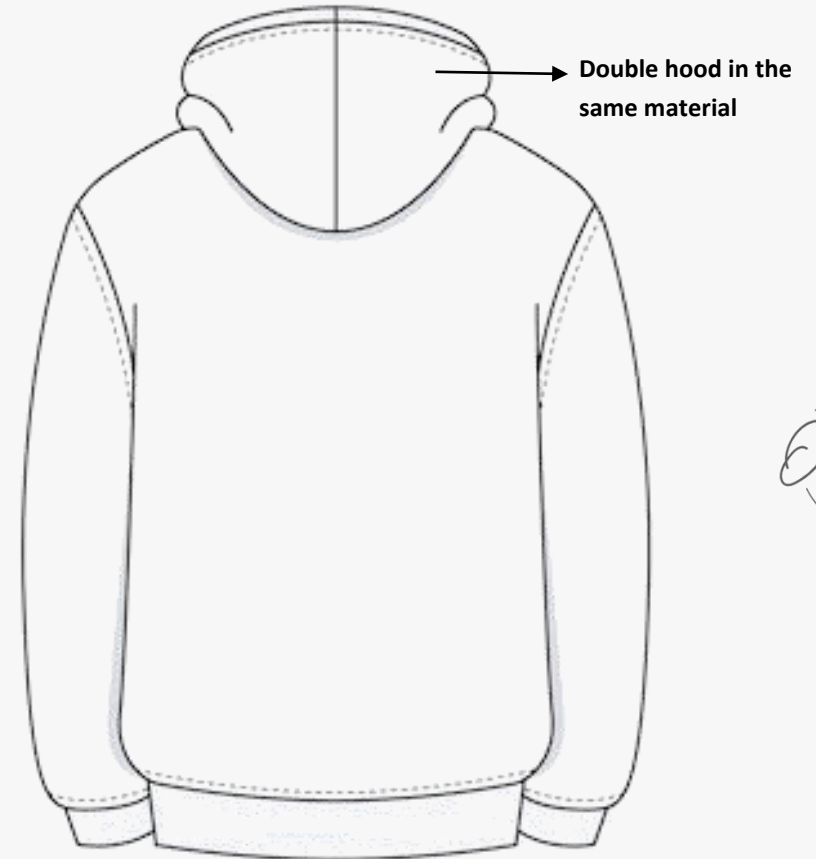


YOUR BRAND

Style:

Date:

DETAILS



COMENTS:

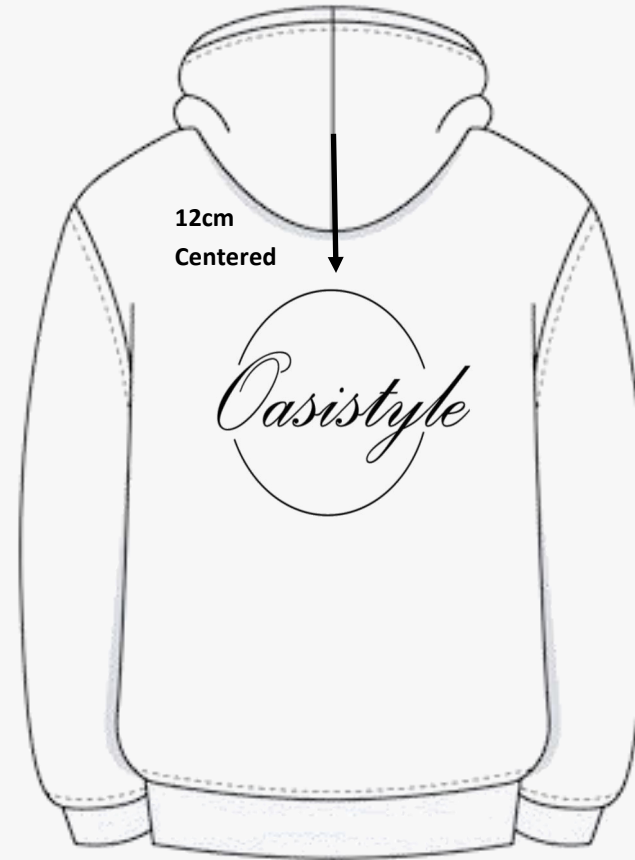
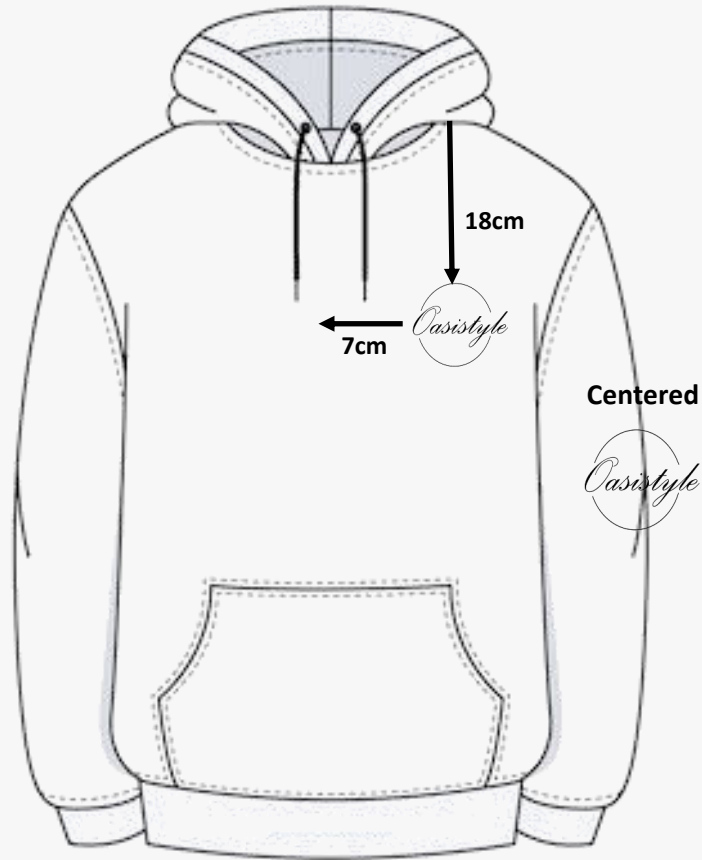
Example → Round cords in the same color as Hoodie with 1.30m - Rib 2x2 - Embroidry eyelets - Print front, back and sleeve

**YOUR BRAND**

**Style:**

**Date:**

**ARTWORK POSITION**



**Color:** Black  
**Type:** Regular Print



**COMENTS:**

**YOUR BRAND**

**Style:**

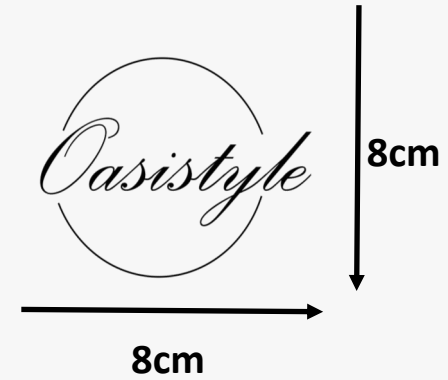
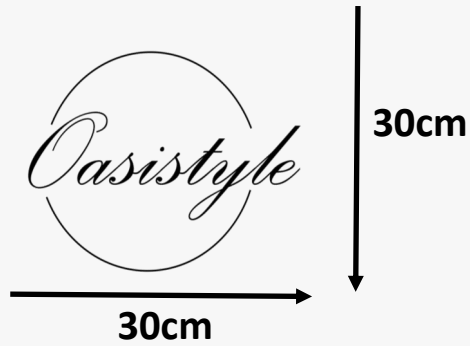
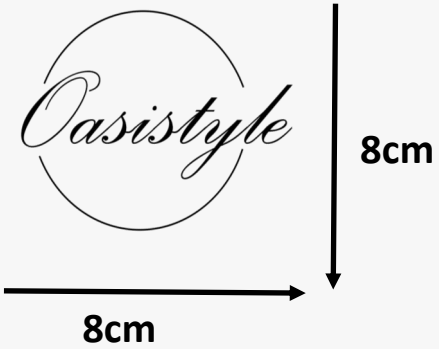
**Date:**

ARTWORK

**FRONT ARTWORK:**

**BACK ARTWORK:**

**SLEEVE ARTWORK:**



**COMENTS:**

**YOUR BRAND**

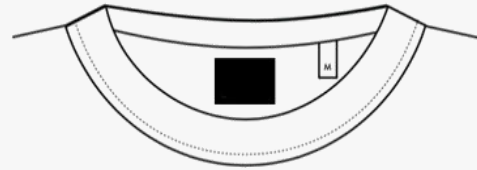
**Style:**

**Date:**

**LABELS**



Cotton  
Black color  
Left side (piece dressed )



**Cotton, Black color**  
**5.5cmx3cm**  
**To be placed 2 cm bellow the neckline**  
**To be sewed on the laterals**



Cotton  
Black color  
Place 4cm to the left of the brand in to the neck seam



**COMENTS:**

**This teckapck was created exclusively as an example to help organize the necessary information. It is available in an editable format so you can customize it according to the specifics of your brand.**

**It is not essential to include visual examples; the main focus is to provide information in a clear and understandable way.**

**If any questions arise, please do not hesitate to contact us.**

**We are here to help with whatever is needed.**

